

Never See The End

(based on the recording by Mission House)

Words and Music by
Jessica Ray Langdon

VERSE

♩ = 79

G

A



1. Where can we run, where can we hide
Though we pass through the fire, or we pass through the flood,

3

D

Bm

G



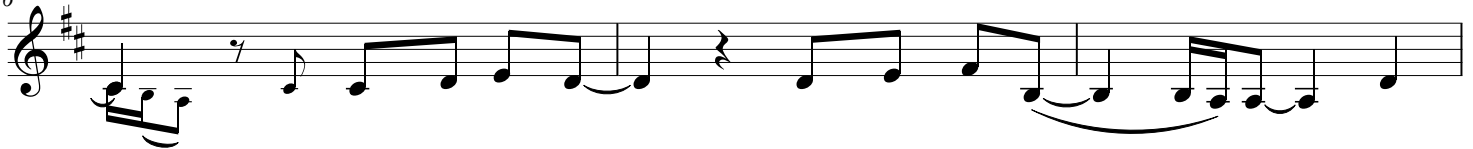
that You will not find us? Deep - est of depths,
You will be with us. Though we walk through the val

6

A

D

Bm



ley, high - est of heights, Your love it chas - - es us.
the dark - est of night, Your love will be our light.

9

G

A

D/F#



No mat - ter where we've been, no mat - ter what we've done, we can't es - cape
And when we are in plen ty, or we are in want, You will al - ways be

12

Bm

1

G

A

2

D.S. G

A



Your love. Oo. And(nough.) And
e - nough.

CHORUS

D A Bm7 D/F# G2 A

we will nev - er see the end, we will nev - er see the end of Your good - ness.

21 D A Bm7 D/F# G2 A

We will nev - er see the end, we will nev - er see the end of Your good - -

(1) | 2 **INSTRUMENTAL**

D A Bm7 A D A Bm7 D/F# G2

ness. good - - ness.

BRIDGE 1a

31 A D

And in our dark - est hours, on our hard - est days, we do not

35

have to be a - fraid. For You will nev - er leave, You will not for - sake

BRIDGE 1b

38 D A Bm7 D/F#

the prom - is - es that You have made. In our dark - est hours, on our hard - est days,

42 G2 A D A Bm7 D/F#