

Battle Belongs

(based on the recording by Phil Wickham)

Words and Music by
Phil Wickham and Brian Johnson

INTRO

♩ = 81

G

Gsus G

VERSE

G

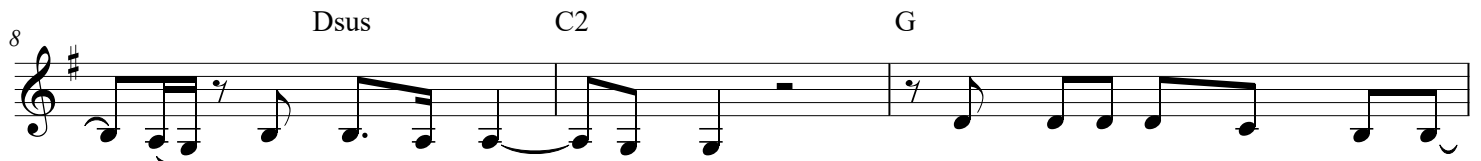


When all I see is the bat -
2. And if You are for



tle, You see my vic - t'ry.
me who can be a - gainst me?

When all I see is the moun -
For, Je - sus, there's noth -



tain, You see a moun - tain moved.
ing im - pos - si - ble for You.

And as I walk through the shad -
When all I see are the ash -



ow, Your love sur - rounds me.
es, You see the beau - ty.

There's noth - ing to fear
When all I see is a cross,

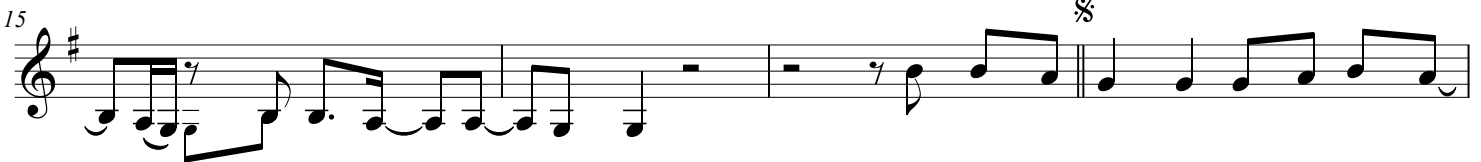
CHORUS

Dsus

G

C2

G



now for I am safe with You.
God, You see the emp - ty tomb.

So when I fight, I'll fight on my knees

19 D Em7 C2 G D Em7 C2 G

with my hands lift - ed high, O God, the bat - tle be - longs to You. And ev - 'ry fear I lay at Your feet,

TURNAROUND

23 D Em7 C2 G *Last time to Coda* D G

I'll sing through the night, O God, the bat - tle be - longs to You.

(1)

|2

BRIDGE

27 Gsus G D G C

longs to You.

(God.) (An) Al - might - y For -

31 G Dsus Em7 Dsus

tress, You go be - fore us. Noth - ing can stand a - gainst the pow - er of our

34 C G Dsus

God. You shine in the shad - ows, You win ev - 'ry bat - tle. Noth - ing can

|1, 2

|3

37 Em7 Dsus Em7 Dsus C2

stand a - gainst the pow - er of our stand a - gainst the pow - er of our God.

40 D N.C. D.S. al Coda

So when I

TAG

41 D Em7 C2 G D

longs to You.

Oh God, the bat - tle be - longs to You. _

OUTRO

G Gsus G